



Installation guide



MODERN LEVER BATH SET



What makes us different?



**QUICK
& EZY TO
INSTALL**



**GUARANTEED
TO FIT**



**NO EXCUSES
5 YEAR
WARRANTY**

EXTRA Features

- Convert any existing taps to lever style
- Three quarter turn lever for finer flow and temperature control
- “Smooth-glide” action for user comfort
- Modern contemporary design
- Durable solid brass construction
- 25 minute installation
- 1300 EZYFIX DIY Helpline



* See full warranty statement at the end of these instructions

Tools you need to install this EZYFIX tap set.

Adjustable spanner



Pliers



Tools you may need to remove your old taps



Pointed nose pliers

Great for pulling out old worn tap washers which tend to swell over the years making them tricky to remove by hand.



Rubber strap wrench

Ideal for undoing dress fittings on old taps or any component that doesn't have flat surfaces to lock a spanner onto.

Stage 1. Remove old taps and spout



1. Turn off the water at your meter and drain your system by opening the lowest hot and cold outlet in your house. Usually the bath taps.



2. Remove the old spout. A rubber strap wrench is ideal for undoing tight spouts. Another way is to insert a screw driver into the outlet and use it as leverage to undo it.



3. Undo the old handle, flange, spindle and make sure you remove the fibre body washer and jumper valve. The old jumper valve may have swollen so the pointed nose pliers will make removal easier.

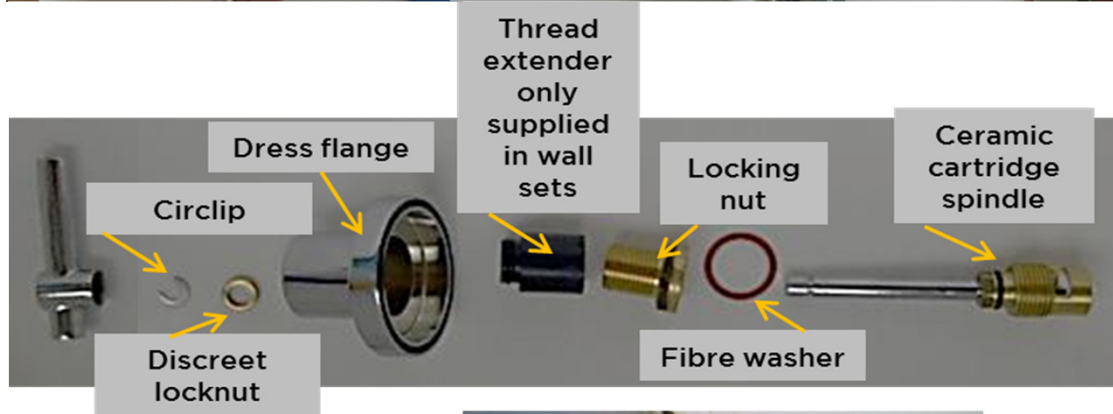


EZYtip: The empty EZYFIX packaging is a great way to handle the old fittings as you remove them so as to avoid damage to your bath or bathroom surface..

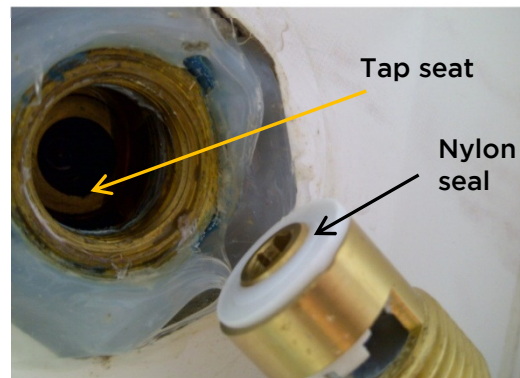
Stage 2. Prepare your new EZYFIX taps



1. Disassemble your new Modern Lever taps with the anti-vandal spanner provided in the pack. It is **CRUCIAL** that you separate the Locking Nut from the Ceramic Cartridge as shown here.



EZYtip: Place the components down in order of removal to make reassembly simple.



IMPORTANT!

This nylon seal at the base of the ceramic cartridge **MUST** be able to seal against the existing tap seat. This is why the ceramic cartridge and the locking nut need to be separated prior to installation.

Stage 3. install your new EZYFIX taps



1. Screw in the ceramic cartridge by hand until it reaches the tap seat. Then gently tighten with a spanner at about the same strength you would use to turn off a tap. Place the fibre washer over and then tighten on the lock nut firmly with a spanner.



2. Screw the pvc thread extender into the tap flange and re-install. Push on the discreet locking nut, circlip, handle adaptor and then handle.

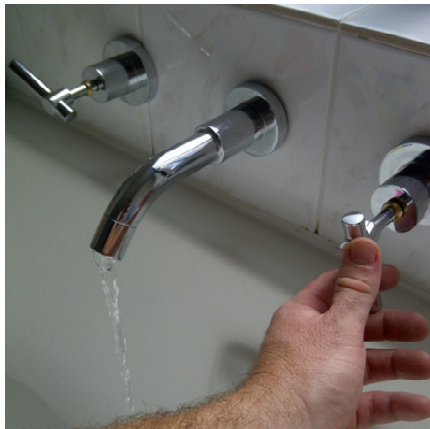
EZYtip: Don't tighten up the handle yet. Wait until you turn on the mains water to set the lever at the angle you want it to be in when the taps are off.



Stage 4. install your EZYFIX bath spout



1. Apply thread seal tape to the thread sticking out the wall. Then screw on the new EZYFIX bath spout. Tighten by hand. You can now turn on your water supply at the mains.



2. Turn off your taps if they are running. Select the angle at which you want the lever to be when switched off. Now simply tighten the discreet locking nut with the anti vandal spanner.

Stage 5. Job done!



Job done ! 😊

Now make sure you tell your friends about it on our facebook page!

www.facebook.com/EZYFIX



Need help still?
Call 1300 EZYFIX
DIY helpline



**NO EXCUSES
5 YEAR
WARRANTY**



NO EXCUSES 5 YEAR WARRANTY - WHAT DOES IT MEAN?

It means that anyone can install EZYFIX tapware as per our instructions and still be covered by our full 5 year warranty. Most other tapware manufacturers void your warranty if their products are not installed by a licensed plumber.

IMPORTANT NOTE: Please check your relevant state laws before undertaking DIY plumbing repairs.

Any claim under this warranty must be made within 5 years of the date of purchase of the product. To make a claim under the warranty, contact EZYFIX tapware direct.

EZYFIX tapware will pay your reasonable, direct expenses of claiming under this warranty. You may submit details and proof of your expense claim to EZYFIX tapware for consideration.

This warranty is given by EZYFIX Tapware ABN 10806209, PO Box 158 Bayswater, W.A. 6053, (08) 9272 6511, sales@ezyfix.com.au .

This warranty is provided in addition to the other rights and remedies you have under law: our goods come with guarantees which cannot be excluded under the Australian Consumer Law. You are entitled to replacement or refund for a major failure and to compensation for other reasonably foreseeable loss or damage. You are also entitled to have the goods repaired or replaced if the goods fail to be of acceptable quality and the failure does not amount to a major failure.



Scan this QR Code with your smart phone to see installation videos and housewife vs plumber video

