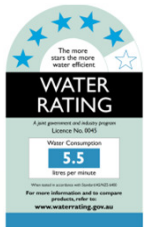




Installation guide



MODERN LEVER BATHROOM BASIN SET



What makes us different?



**QUICK
& EZY TO
INSTALL**



**GUARANTEED
TO FIT**



**NO EXCUSES
5 YEAR
WARRANTY**

EXTRA Features

- Convert any existing taps to lever style
- Three quarter turn lever for finer flow and temperature control
- “Smooth-glide” action for user comfort
- 5 Star WELS rated to 5.5 L/min
- Modern contemporary design
- Durable solid brass construction
- 25 minute installation
- 1300 EZYFIX DIY Helpline



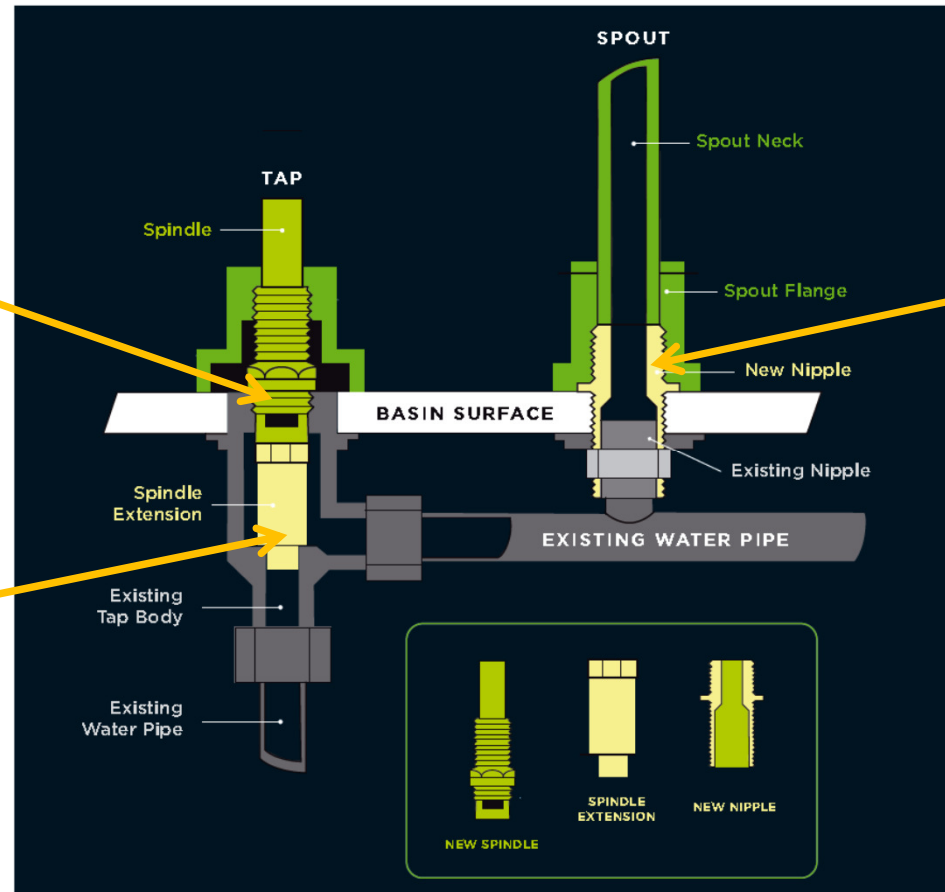
* See full warranty statement at the end of these instructions

How EZYFIX Modern Lever works.

Ceramic Cartridge or Spindle has around 10mm of threaded height adjustment

Spindle Extension
Can add another 25mm of height adjustment if needed for deep seated tap bodies.

New Nipple
will adapt your spout to either 5/8" or 1/2" existing breach piece nipple.



Tools you need to install this EZYFIX tap set.

Adjustable spanner



Pliers



Tools you may need to remove your old taps



Pointed nose pliers

Great for pulling out old worn tap washers which tend to swell over the years making them tricky to remove by hand.



Rubber strap wrench

Ideal for undoing dress fittings on old taps or any component that doesn't have flat surfaces to lock a spanner onto.



Basin wrench

Sometimes the basin spout locknut at the back of your cabinet is tricky to access. This tool helps overcome the issue OR alternatively look out for our EZYtip in this guide.

Stage 1. Remove old taps and spout



1. Turn off the water at your meter and drain your system by opening the lowest hot and cold outlet in your house. Usually the bath taps.

2. Remove the old buttons, handles, flanges, spindles and jumper valves. The rubber strap wrench is ideal for undoing tight dress flanges.



Cut out the existing o-ring on the breech piece and replace with the one supplied with your new taps before putting the new spout on.

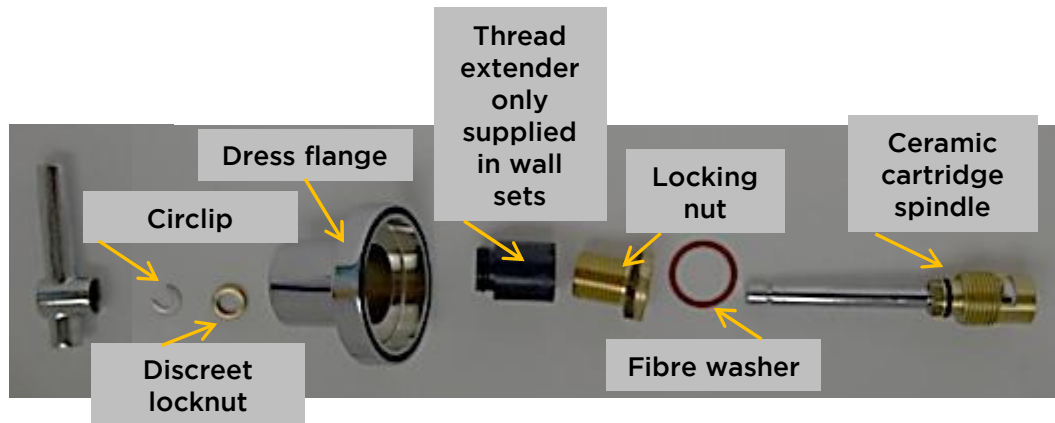
3. Undo the old spout locknut underneath your basin then twist and pull out the spout.

EZYtip: If you are struggling to loosen this nut simply lock a spanner onto it with one hand whilst twisting the spout from above with the other.

Stage 2. Prepare your new EZYFIX taps



1. Disassemble your new Modern Lever taps with the anti-vandal spanner provided in the pack. It is **CRUCIAL** that you separate the Locking Nut from the Ceramic Cartridge as shown here.

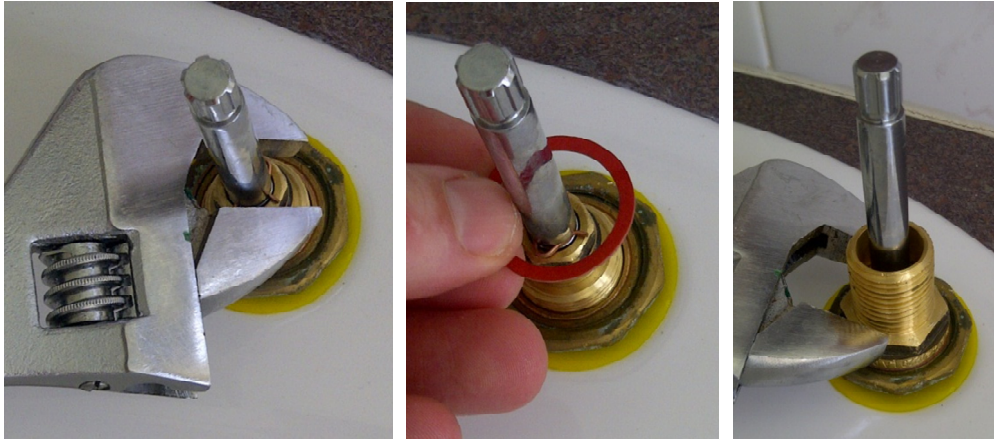


EZYtip: Place the components down in order of removal to make reassembly simple.



2. Check to see the depth of your existing tap seat. If it is really deep then this is where you would install the spindle extension. In this demonstration there was enough height adjustment on the ceramic cartridge so it was not required.

Stage 3. install your new EZYFIX taps



1. Screw in the ceramic cartridge by hand until it reaches the tap seat. Then gently tighten with a spanner at about the same strength you would use to turn off a tap. Place the fibre washer over and then tighten on the lock nut firmly with a spanner.



2. Screw on the tap flange and re-install the discreet locking nut, circlip, handle adaptor and then handle.

EZYtip: Don't tighten up the handle yet. Wait until you turn on the mains water to set the lever at the angle you want it to be in when the taps are off.



Stage 4. install your new EZYFIX spout

1. Select the correct sized adaptor, apply thread tape and screw into spout.



2. Push on the new spout and re-tighten locknut beneath basin.
EZYtip: Lubricate the orings on the existing breech piece nipple with tap lubricant or even olive oil! to make assembly easy.



Stage 5. Finish the job!



1. Turn on your water supply at the mains then run back inside to turn off your running tap. You can now select what angle you want your levers installed at and then secure them with the anti vandal spanner.



Before



After



Job done ! 😊

Now make sure you tell your friends about it on our facebook page!

www.facebook.com/EZYFIX

Need help still?
Call 1300 EZYFIX
DIY helpline



**NO EXCUSES
5 YEAR
WARRANTY**

NO EXCUSES 5 YEAR WARRANTY - WHAT DOES IT MEAN?

It means that anyone can install EZYFIX tapware as per our instructions and still be covered by our full 5 year warranty. Most other tapware manufacturers void your warranty if their products are not installed by a licensed plumber.

IMPORTANT NOTE: Please check your relevant state laws before undertaking DIY plumbing repairs.

Any claim under this warranty must be made within 5 years of the date of purchase of the product. To make a claim under the warranty, contact EZYFIX tapware direct.

EZYFIX tapware will pay your reasonable, direct expenses of claiming under this warranty. You may submit details and proof of your expense claim to EZYFIX tapware for consideration.

This warranty is given by EZYFIX Tapware ABN 10806209, PO Box 158 Bayswater, W.A. 6053, (08) 9272 6511, sales@ezyfix.com.au .

This warranty is provided in addition to the other rights and remedies you have under law: our goods come with guarantees which cannot be excluded under the Australian Consumer Law. You are entitled to replacement or refund for a major failure and to compensation for other reasonably foreseeable loss or damage. You are also entitled to have the goods repaired or replaced if the goods fail to be of acceptable quality and the failure does not amount to a major failure.



Scan this QR Code with your smart phone to see installation videos and housewife vs plumber video

