



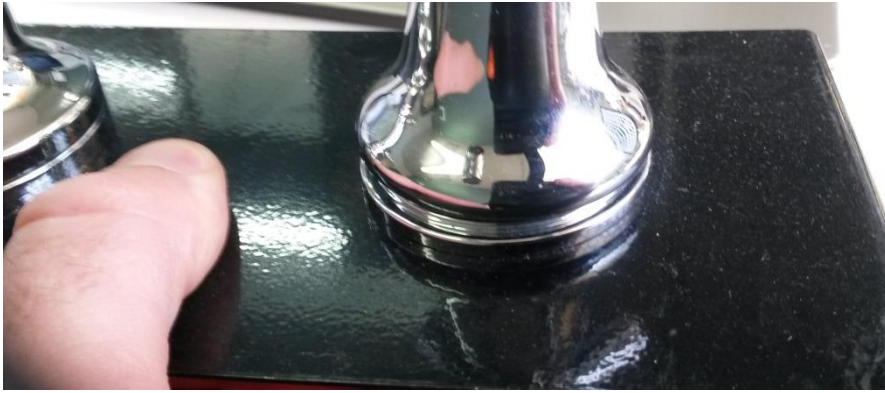
# Your basin or sink tap flanges won't screw all the way down?



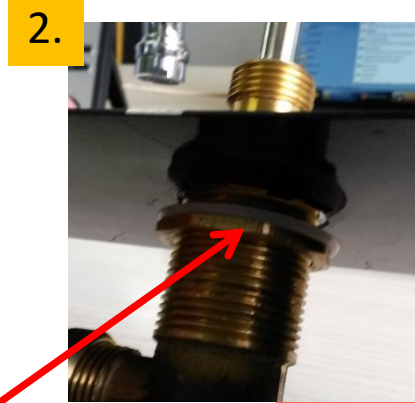
## **EZYFIX Trouble-shooter:**

This guide provides a solution that can be used on both modern and classic styled hob type taps.

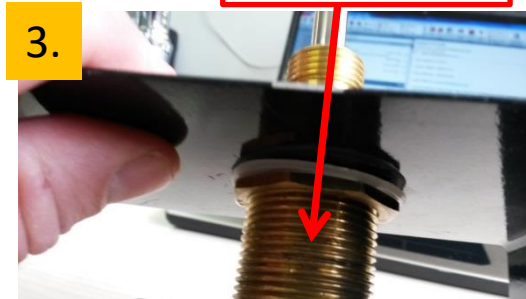
# Here's the solution...



Top and bottom  
body locknuts



Push down



If this happens then the simple solution is to lower the entire basin tap body assembly.

1. Remove all buttons, handles and flanges and loosen body locknut above the basin.
2. Loosen the body locknut below the basin.
3. Push down on the basin body so it moves the distance required to remove the gap beneath the flange.
4. Re-tighten the top body locknut and re-dress the tap.



**Still having issues?  
Don't return the set,  
simply call or email  
us. We are here to  
help. 😊  
Ph 1300 399 349**